



High degree of customization, snap type design
help you save space and cost

Tower-X-HV-768V 280Ah

High Voltage

Battery Rack Solution



Product introduction

The Tower-X-HV-768V 280Ah high-voltage energy storage rack is based on a modular design concept and consists of energy storage units, control units, heat dissipation modules, and fire suppression modules. It has the characteristics of high energy density, long life cycle, low self discharge rate, and environmental sustainability, make lithium battery energy storage rack products widely used in various energy storage.

Product Features



Safe and reliable
Longer cycle life.



Remote Monitoring
Self-developed APP



Smart and friendly
WiFi remote Monitoring
(optional)



Exquisite craftsmanship
Higher specific energy, more
environmentally friendly.



Smart BMS Big Power
Smart BMS



Integrated design
Convenient installation
and higher efficiency.



Full Bracket Design
Full space for each cell's
best performance

Application scenarios



Microgrid



High Powered Industry

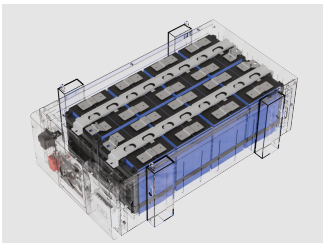


Residential Complexes



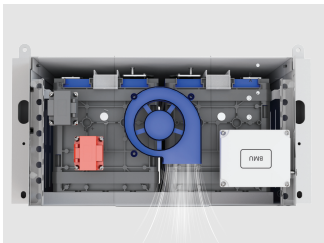
Commercial Centers

215kWh Tower-X-HV-768V 280Ah High Voltage Battery Rack Solution



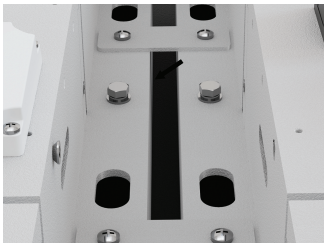
Optimized structural safety

A+ quality EVE cell, 6000 cycles at 90% DOD
End-plate technology



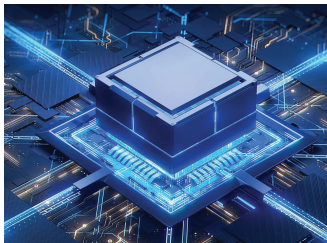
Air-cooled design

Built-in high-volume turbo fan covers, strong cooling performance



Bolted

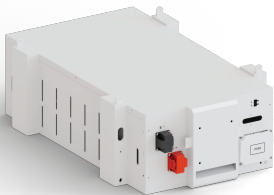
Integrated bolt-on, durable and stable, easy to install, customized



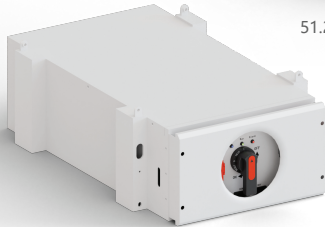
Full-time equalization BMS

Synchronized intelligent regulation of cell voltage at any time condition and temperature

Model	51.2V 280AH High Voltage Module	Remark
Rated energy	14.33KWH	51.2V280AH
Rated Capacity	280Ah@25°C/0.2C	0.2C charge and discharge
Rated voltage	51.2V	16S1P
Charging voltage	57.6V	Constant current/ Constant voltage charging
Discharge termination voltage	44.8V	Cutoff discharge
Rated charging current	140A	0.5C
Maximum charging current	168A	
Rated discharge current	140A	0.5C
Maximum discharge current	168A	
Size	416*782*240	L*W*H (mm)
Weight	≈120Kg	
Internal Impedance	<160mΩ	



51.2V 280AH High Voltage Module



1000V200A high voltage control box

Model	1000V200A High voltage control box	Remark
Applicable voltage platform	256V-768V	
Number of adapted modules	5-15	Minimum use of 5 modules
Rated current	200A	
Maximum current	150A	
Size	416*782*240	L*W*H (mm)
Weight	30Kg	

215kWh Tower-X-HV-768V 280Ah High Voltage Battery Rack Solution



Model No

Tower-X-HV-768V280Ah

Design parameters	
Rated Voltage	768V
Operating range	672V-864V
Charge cut-off voltage	864V
Discharge cut-off voltage	672V
Rated charging/discharging current	140A
Rated capacity	215kWh
Maximum output power	107KW
Adaptable PCS power	50-100KW
Communication mode	CAN
System Dischargeable Energy	208kWh
Operating Temperature Range	Charging: 0~55°C / Discharging: -10~60°C
Operating humidity range	5-50%RH
Depth of discharge	80-90%
Cycle Life	25±2°C/0.2C/80%≥5000
Protection Class	IP20
System cycle efficiency	≥90%@AC
Cooling method	natural air cooling
Fire-fighting system	aerosol
Overall Dimension	1020*785*2059MM
Weight	